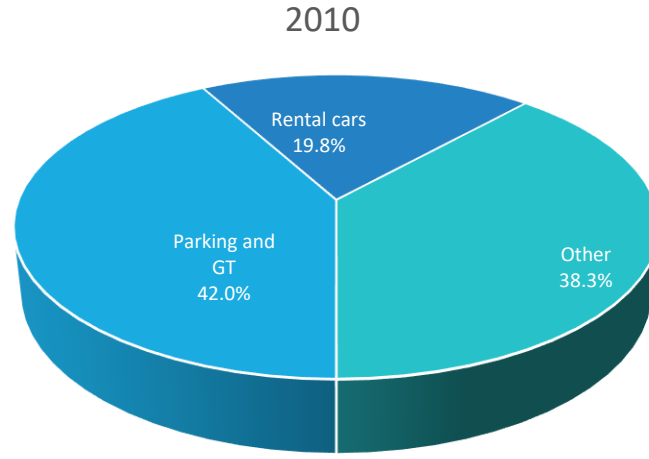
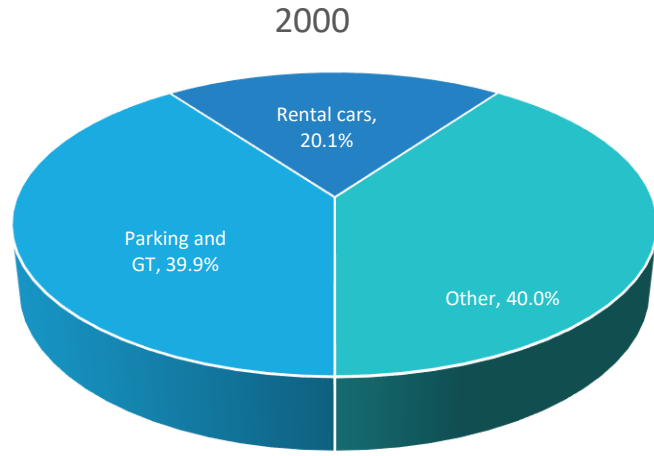




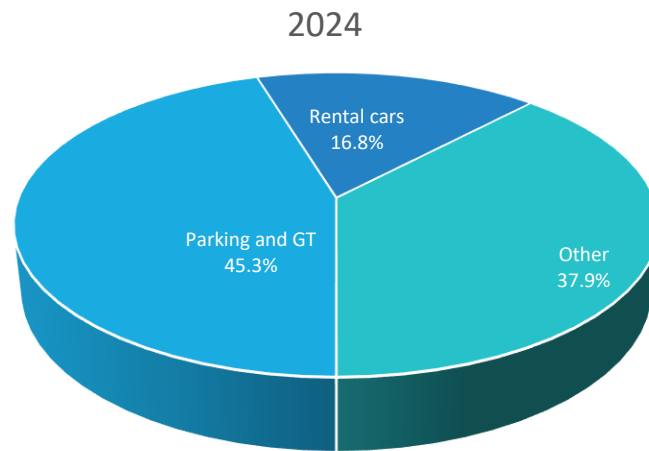
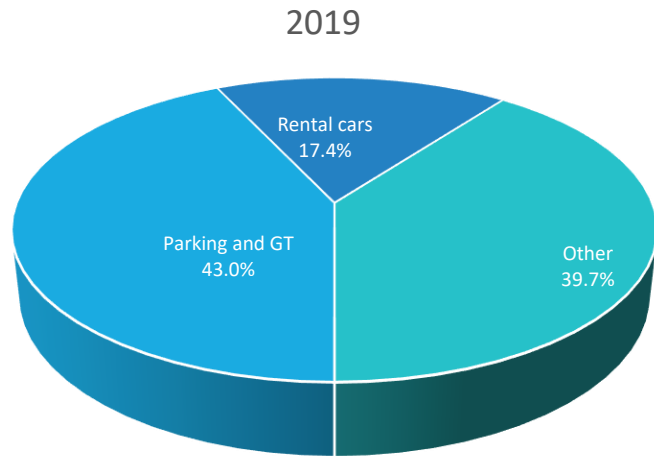
# National Aviation Economic Development Conference

Airport Ground Transportation Fees- April 16, 2026

# Parking & Ground Transportation Comprise an Increasing Share of Non-Aeronautical Revenues

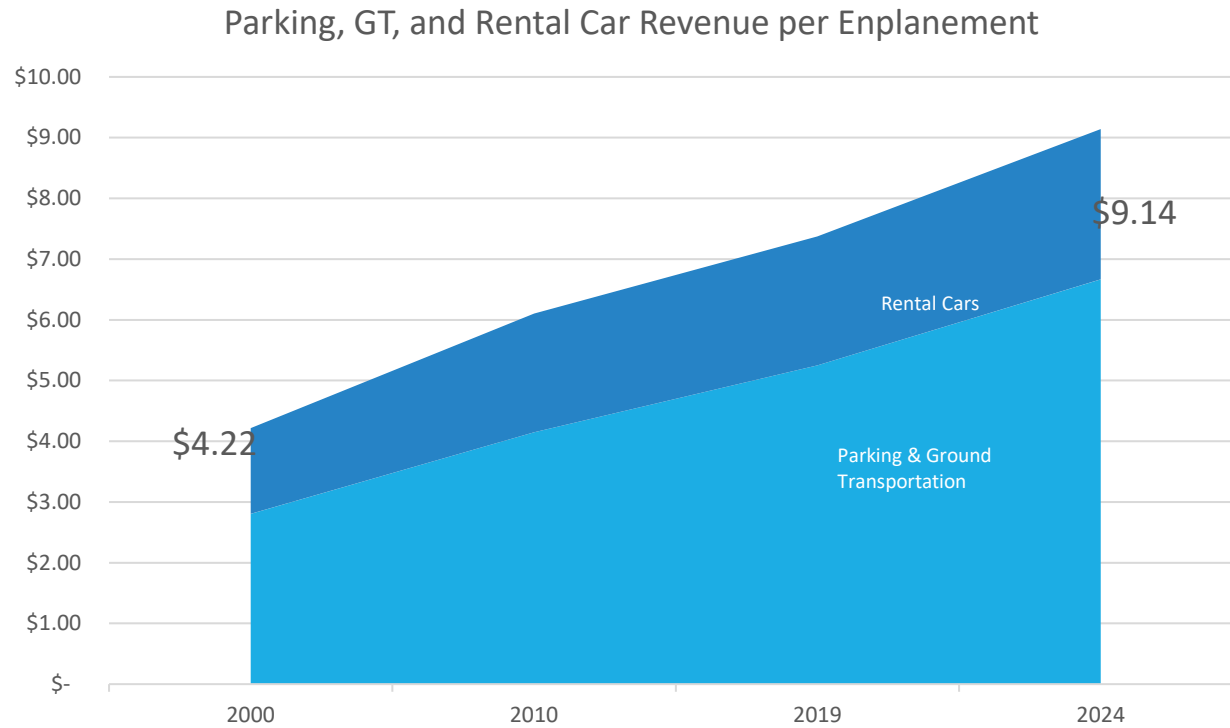


+ Increase in parking and ground transportation revenues has been partially offset by decreases in rental car revenues



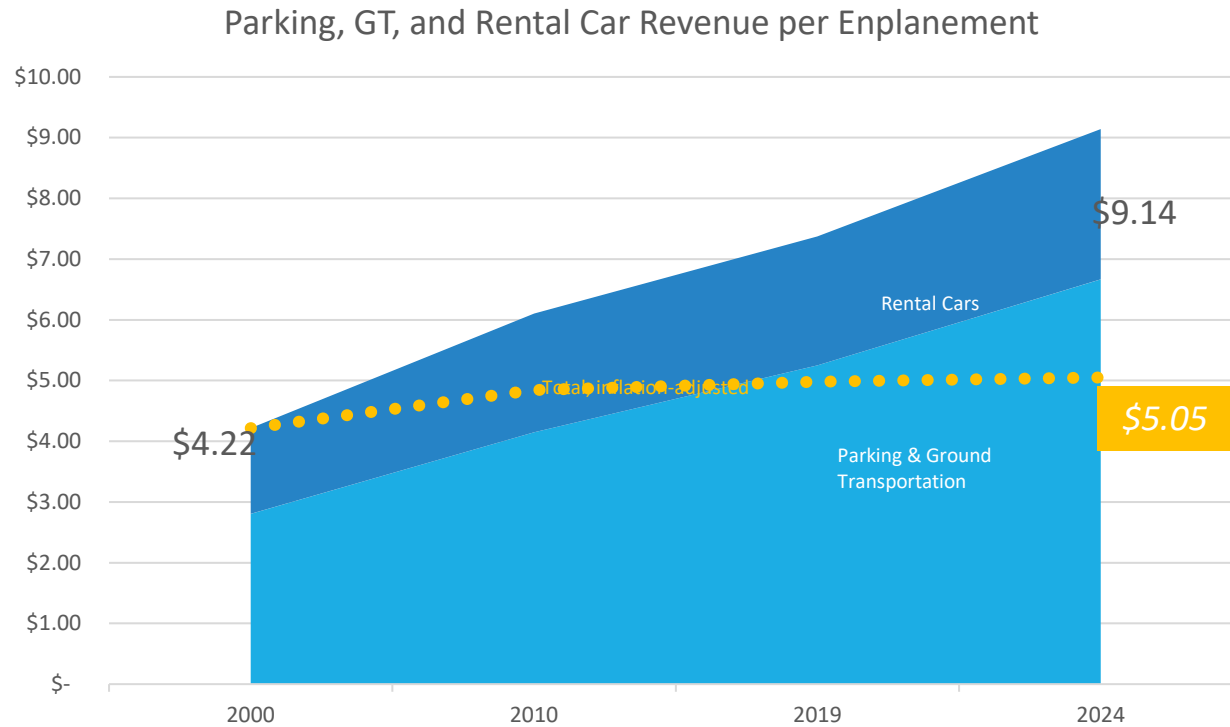
Source: FAA, AAS-400, CATS Report 127

# Per Enplanement, Revenues Have Increased over 2x



Source: InterVISTAS, from data provided by FAA, AAS-400, CATS Report 127

# Adjusted for Inflation...



+ Rental car revenues per passenger have declined since 2000

- \$1.41 in 2000
- \$1.55 in 2010
- \$1.43 in 2019
- \$1.37 in 2024

+ Parking and ground transportation revenues have increased by 30%

+ Total ground access revenues per passenger have increased by 20%

Source: InterVISTAS, from data provided by FAA, AAS-400, CATS Report 127

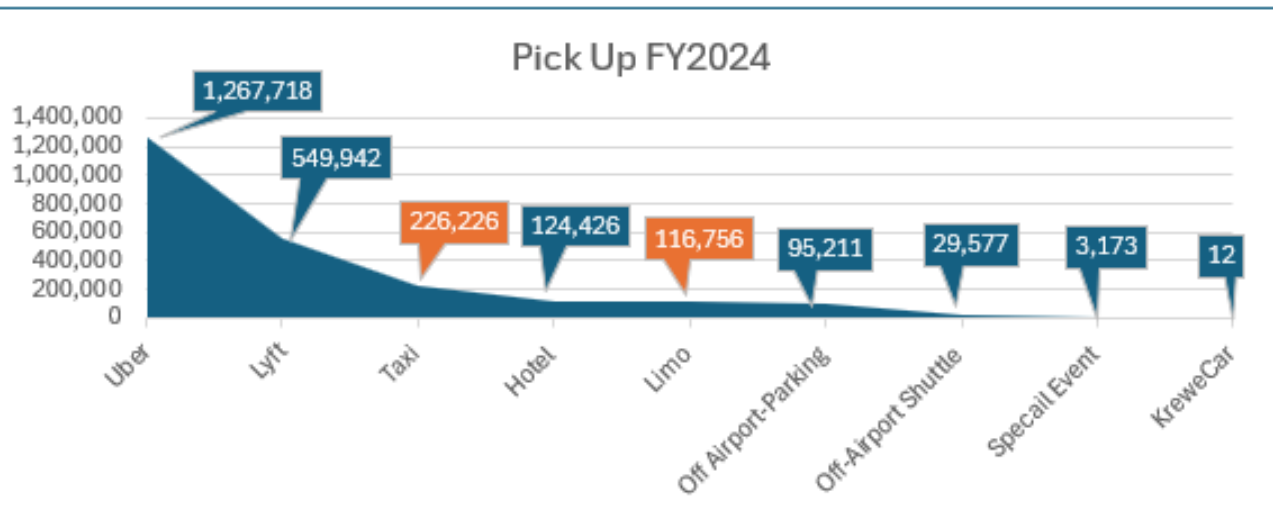


# The Problem

---

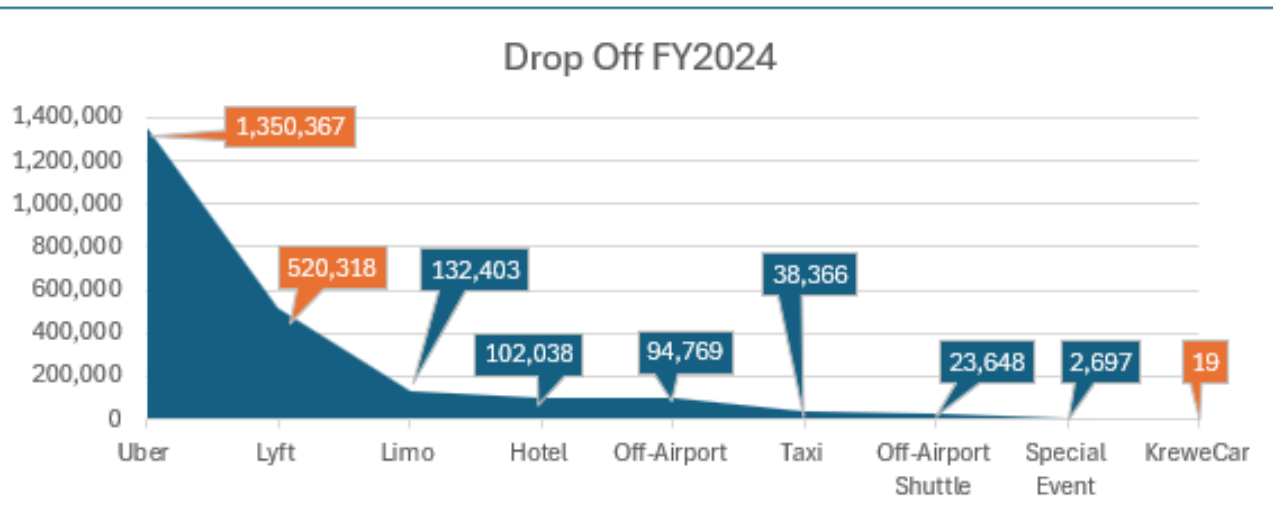
-Traffic-

Mode	Pick Up
Uber	1,267,718
Lyft	549,942
Taxi	226,226
Hotel	124,426
Limo	116,756
Off Airport-Parking	95,211
Off-Airport Shuttle	29,577
Specail Event	3,173
KreweCar	12
<b>Total FY2024</b>	<b>2,413,041</b>



Taxi/Limo Pickups 342,982

Mode	Drop Off
Uber	1,350,367
Lyft	520,318
Limo	132,403
Hotel	102,038
Off-Airport	94,769
Taxi	38,366
Off-Airport Shuttle	23,648
Special Event	2,697
KreweCar	19
<b>Total FY2024</b>	<b>2,264,625</b>



TNC's 1,870,704

# The Numbers That Drove The Decision

Total Commercial Transactions

4.6M Annually

2.4M Pick Ups

2.2M Drop Offs

# Commercial Traffic Pick up & Drop off Zones Before June 3, 2025

---



Drop Off Zone (Curb)



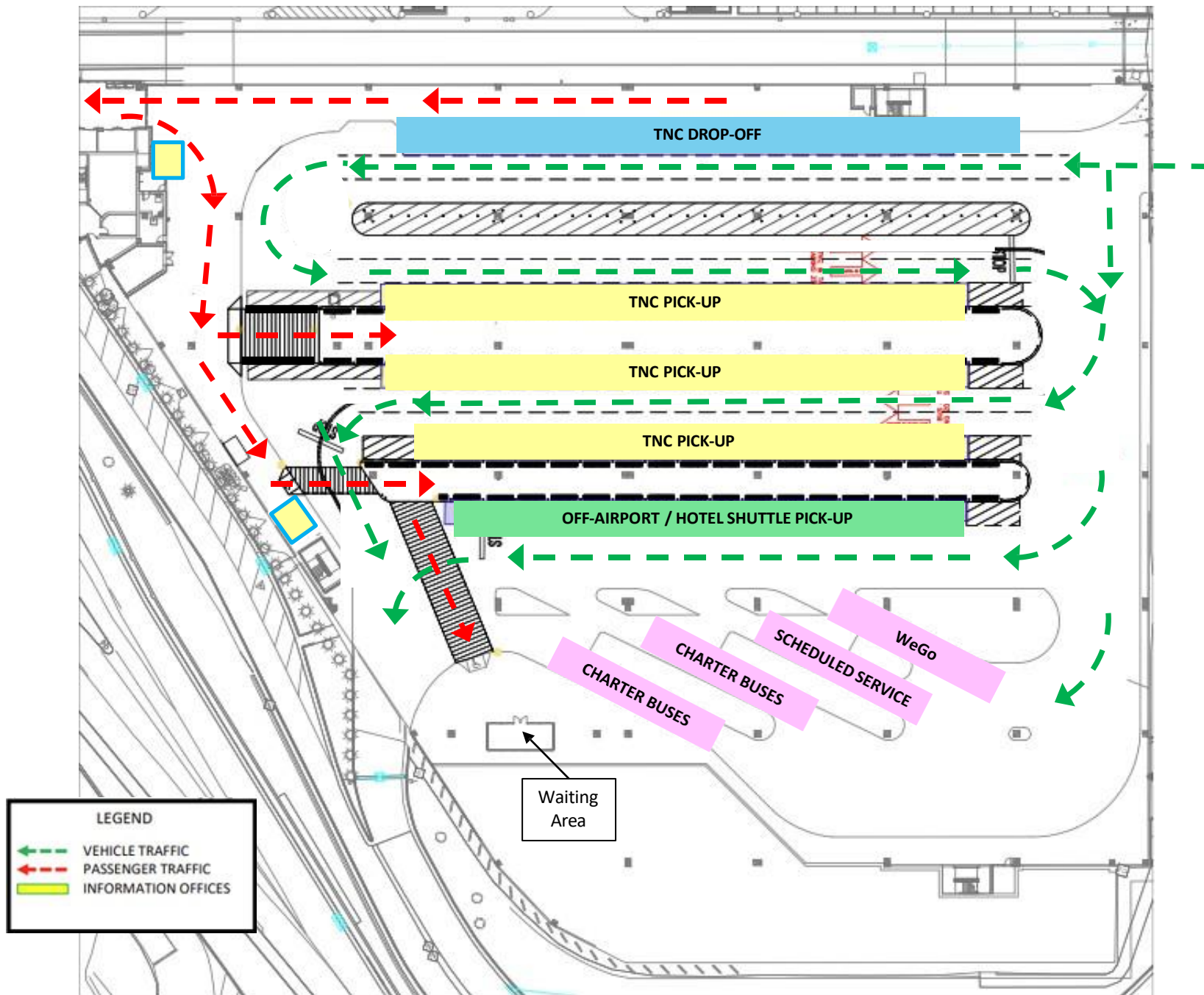
~435 Feet,  
Outer Curb Only

Pick Up Zone (GTC)





# Ground Transportation Center (GTC)



# GTC

- Effective 6.3.25
- TNC Drop-offs in same location as Pick-ups to minimize rematch wait times/decrease roadway traffic (ADA Exception)
- Minimized pedestrian/vehicle interactions

- Passenger
  - New 4-minute walk (683 ft) being substantially greater than previous 1-minute walk (124 ft)
- Driver
  - “Soft” roll out of enforcement to develop culture with drivers, help communicate with passengers
- Operators
  - Update of their online wayfinding assets

## Initial Reaction

---

- Passengers
- Drivers
- Operators



